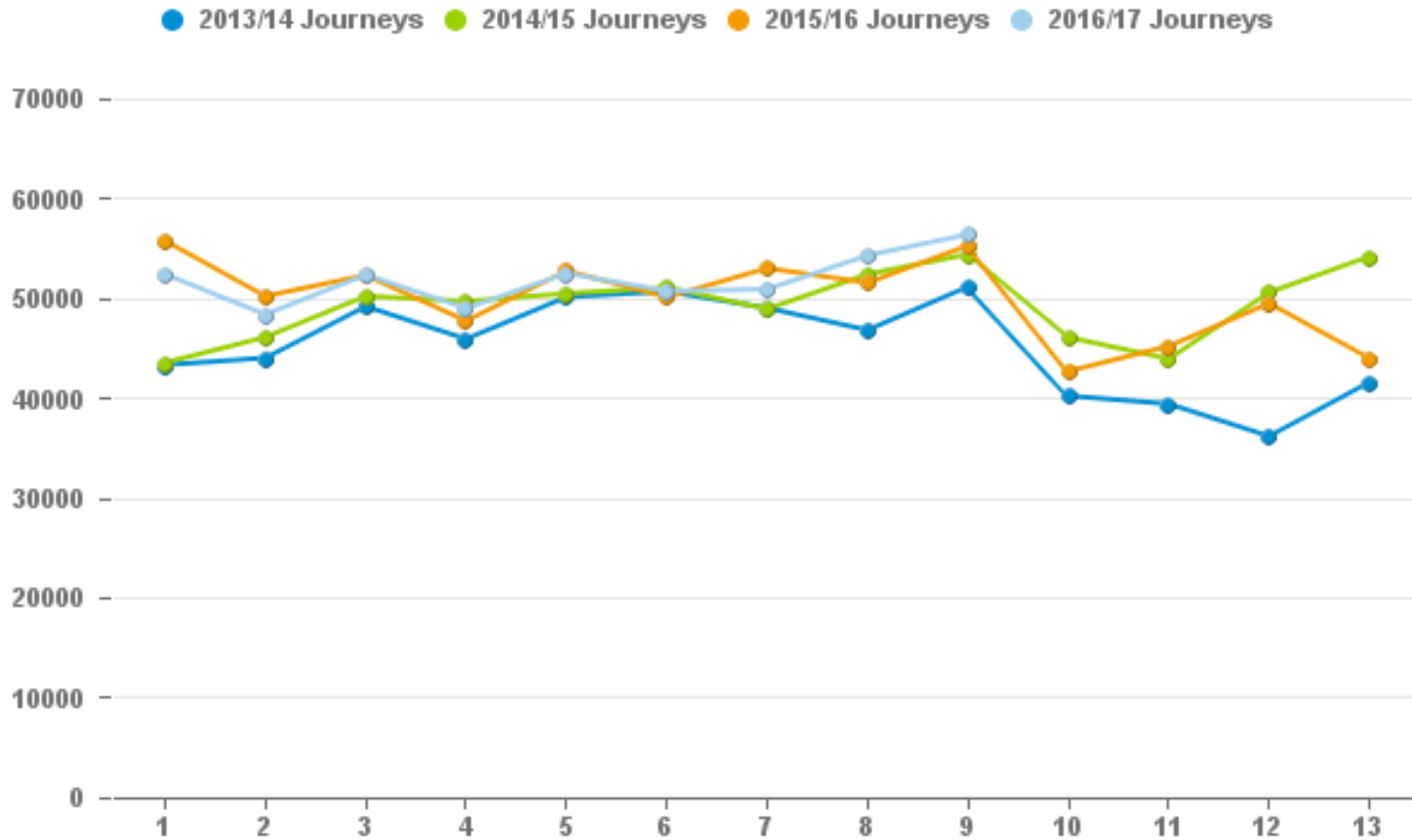

Great Western Railway

GWR Business Update
Devon & Exeter Rail Working Party
17th February 2017

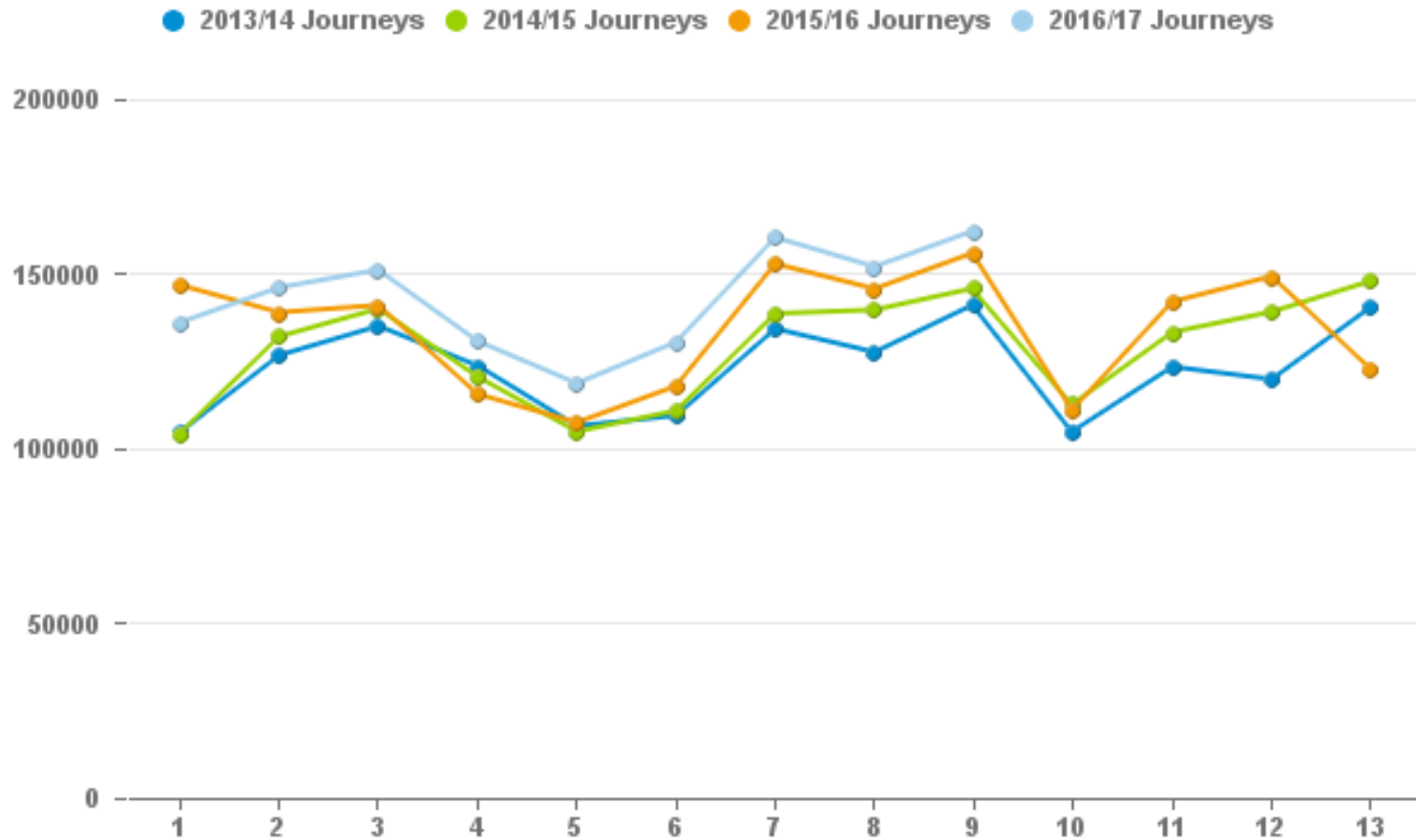
Lewis Ward
Regional Development
Planning & Programme Manager



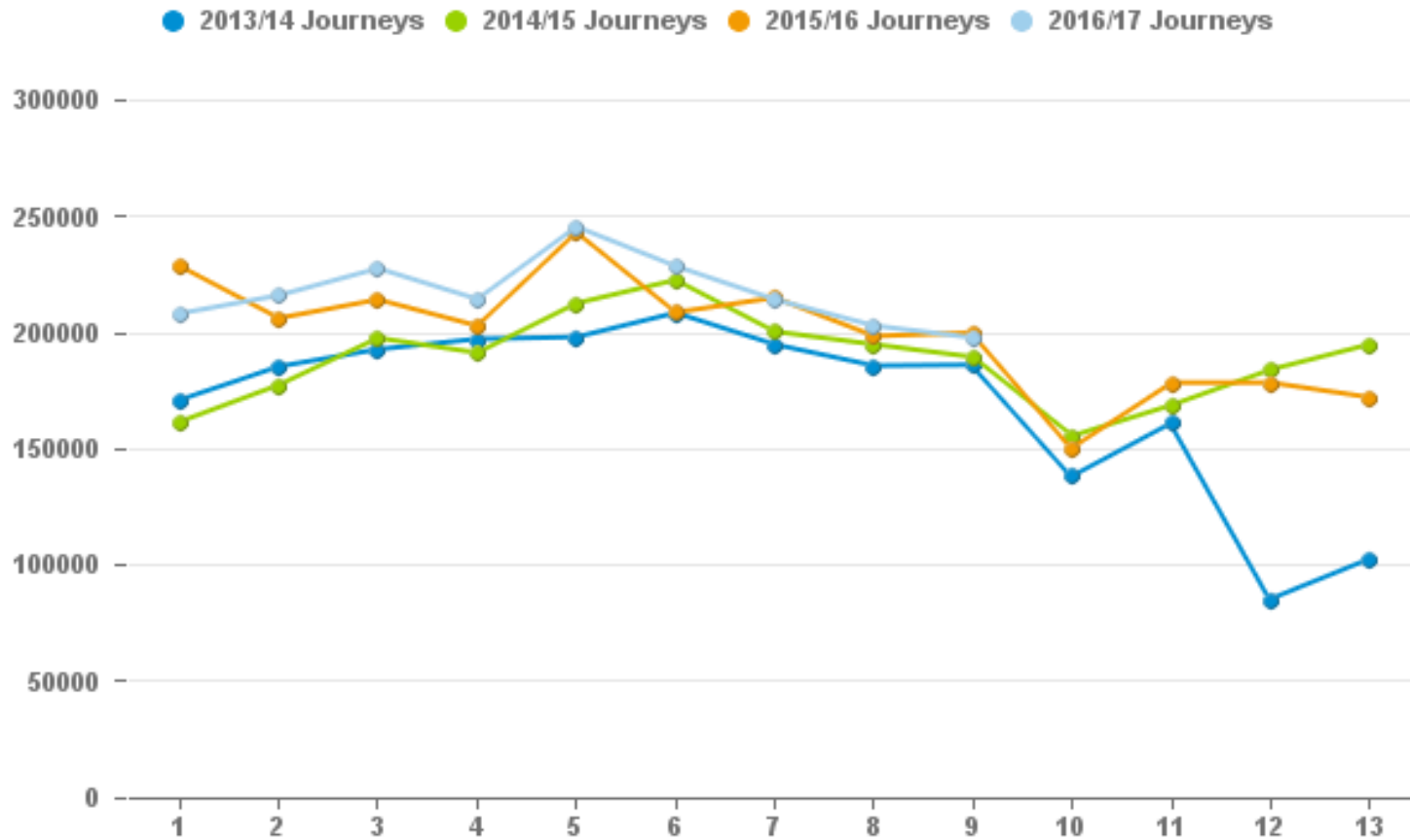
Patronage – Barnstaple Line



Patronage – Exmouth Line



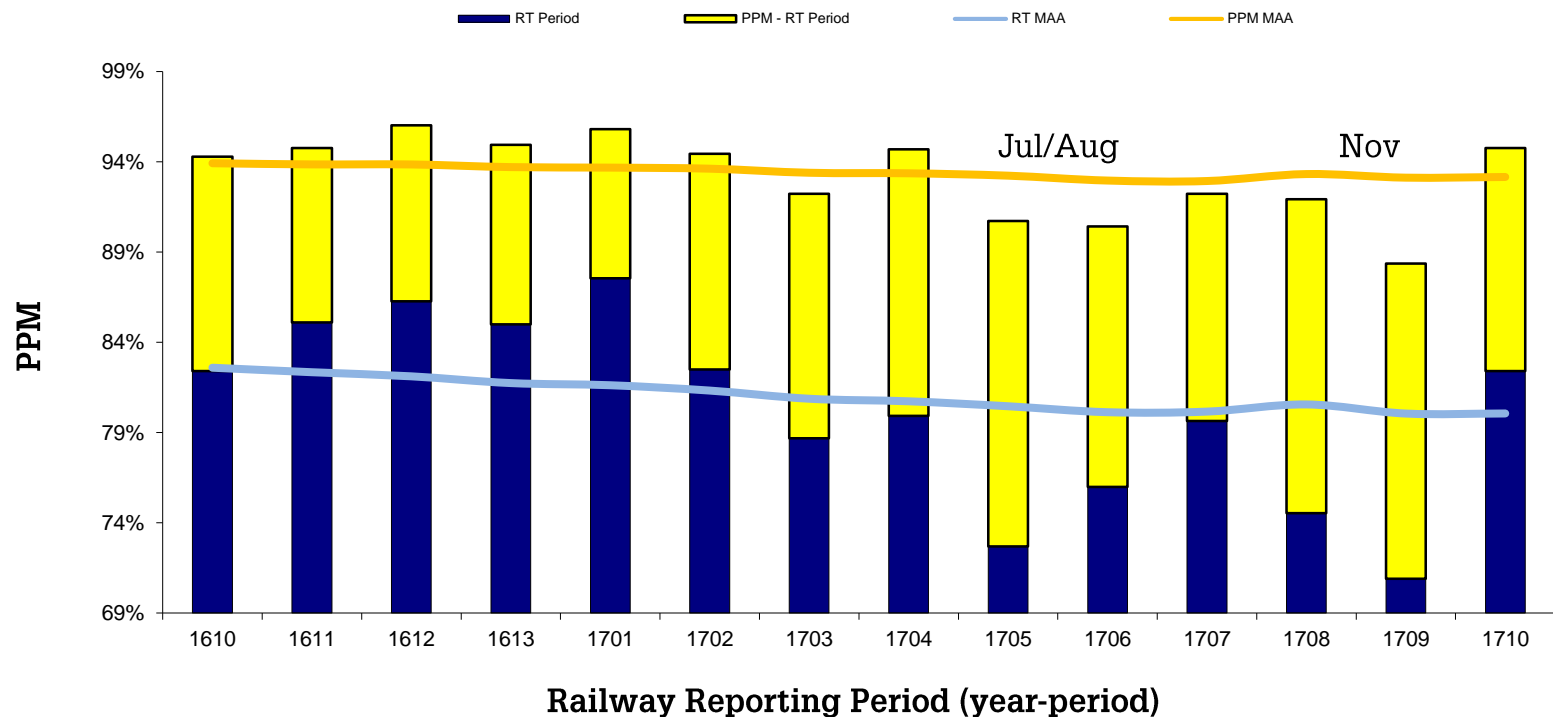
Patronage – Paignton/Plymouth Lines



Performance

Devon Metro - Punctuality

All Day PPM: Period v MAA



Public Performance Measure (PPM) MMA of 93.2% for local Devon services

Performance

Devon Metro – Class 143 fleet

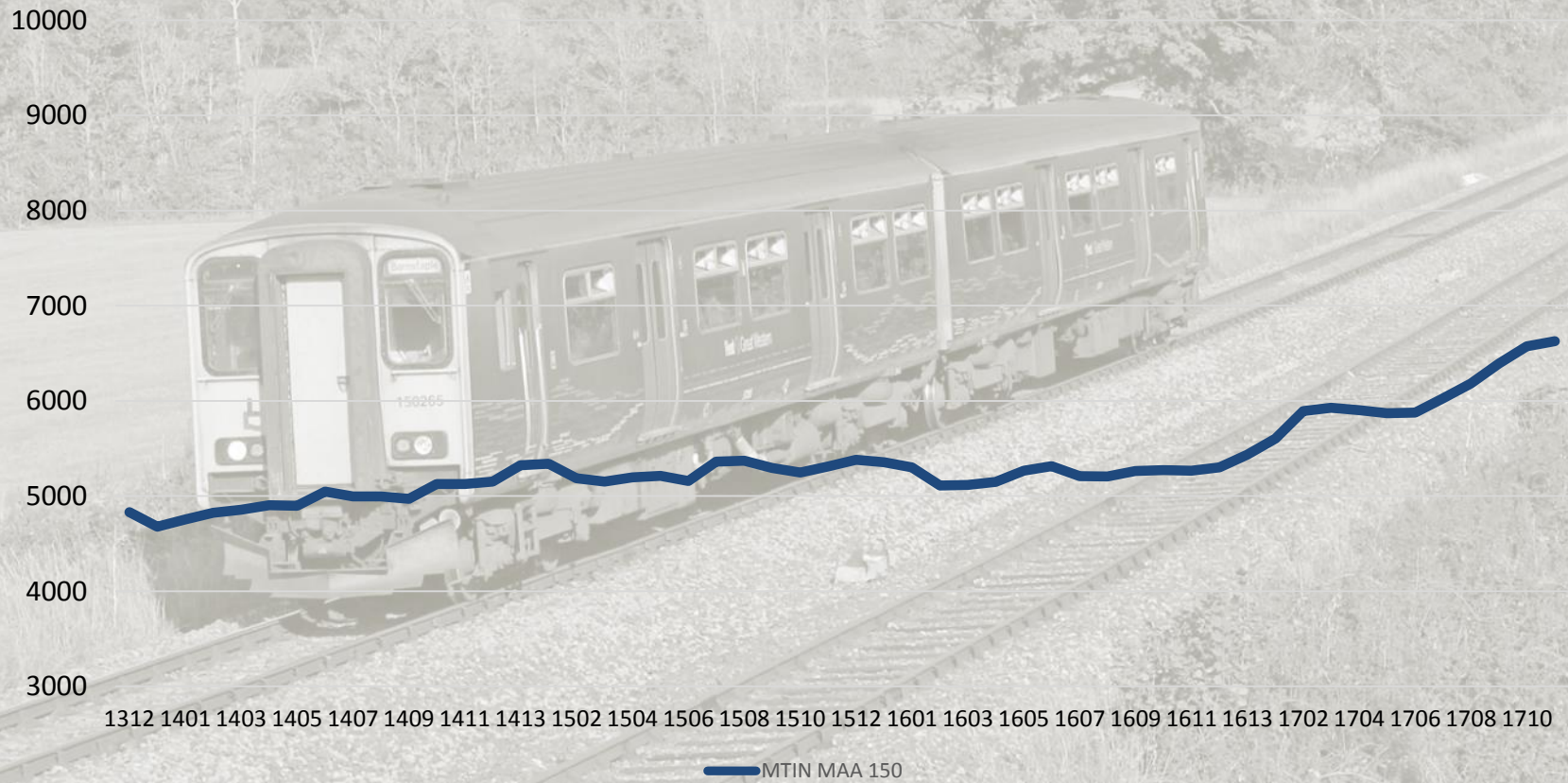
Miles Per Technical Incident (MTIN)



Performance

Devon Metro – Class 150 fleet

Miles Per Technical Incident (MTIN)



Performance

Devon Metro – Class 153 fleet

Miles Per Technical Incident (MTIN)



GWR fleet update

- **Intercity Express Train** testing ongoing with a range of scenarios tested
- Anticipating the adjusted **electrification** programme we will have an entirely bi-mode fleet of new Intercity Express Trains meaning no electrification impact on introduction
- Class 387 Electrostar presence is ramping up in the Thames Valley - Turbo cascade to Severn beach line starts this year. A bigger impact will be noticeable from end of this year as Class 150/2 numbers increase and we can strengthen key **Devon Metro** services before the big timetable change in Dec 2018
- Refurbishment of **Night Riviera** stock underway, the first seated coach already in service other seated coaches and berths entering service in coming months.



Recent Successes

Tiverton Parkway car park extension

- Opened 4 November 2016
- 186 additional spaces provided
- 42% increase in capacity (total 633 spaces)
- First car parked within 10 seconds of opening!
- Statistics since November 2016 show 2% additional growth over sector average



Recent Successes

Newcourt station annual use approaches 100k mark

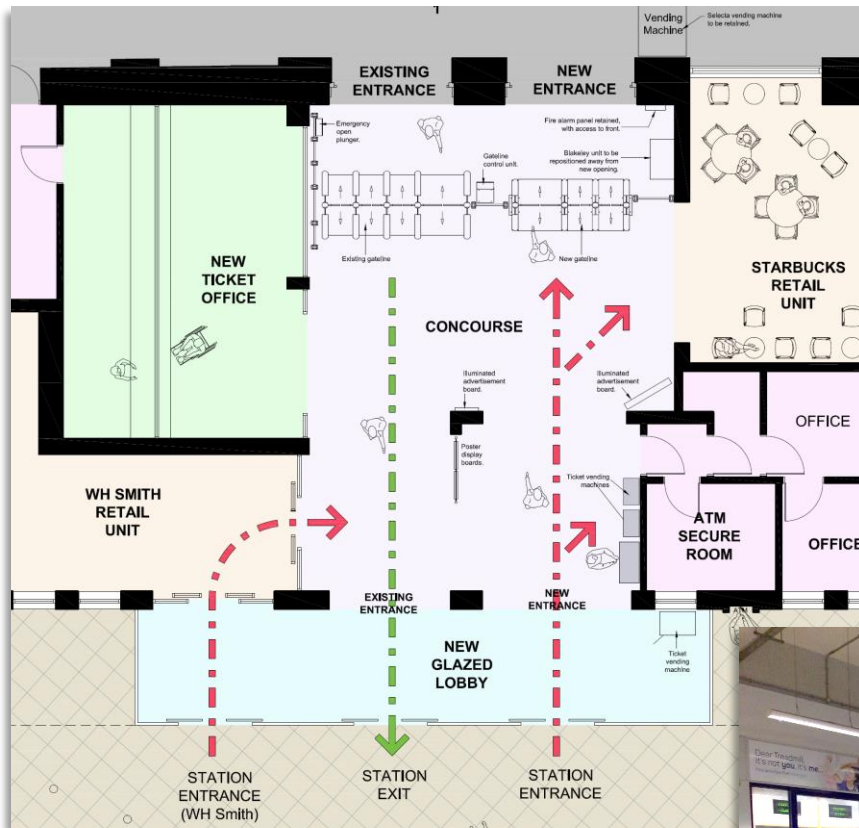
- Opened June 2015
- Promoted by Devon County Council
- 73,832 journeys in first year (2015/16)
- 76,027 journeys 2016/17 year to date (Periods 1 to 10)
- On course for about 100,000 journeys in 2016/17



Exeter St Davids Depot

- Detailed design underway
- Application to Exeter City Council for Prior Approval to be submitted soon
- Enables extra trains to be used across Devon Metro
- Improves maintenance and repair facilities locally
- Creates additional skilled jobs

Exeter St Davids ticket gateline



Project involves...

- A new accessway onto platform
- Doubling of gateline capacity
- Easier access and less crowding
- Interface with forecourt vision
- £1.222m investment through SCPF

- 2.57m entries/exits
- Congested concourse



Exeter St Davids forecourt

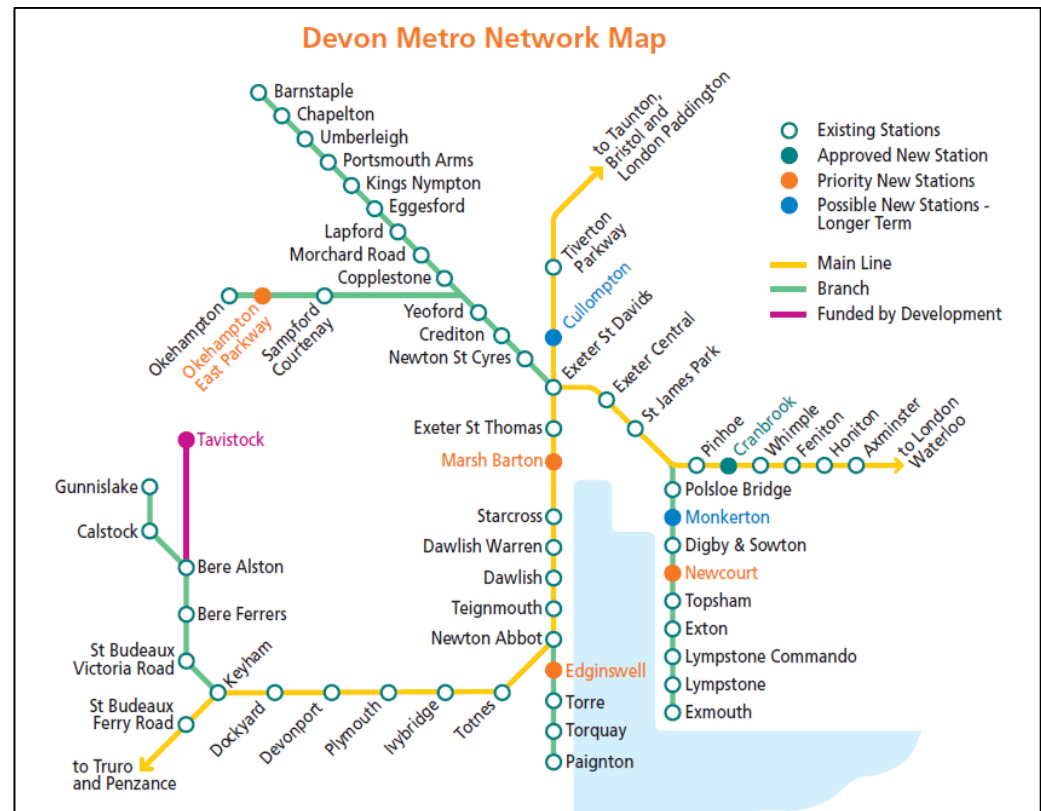
- Partnership between Devon county Council, Exeter City Council, GWR and Network Rail.
- Final draft in preparation.
- Next stage to understand detail on parking.



New Stations involvement

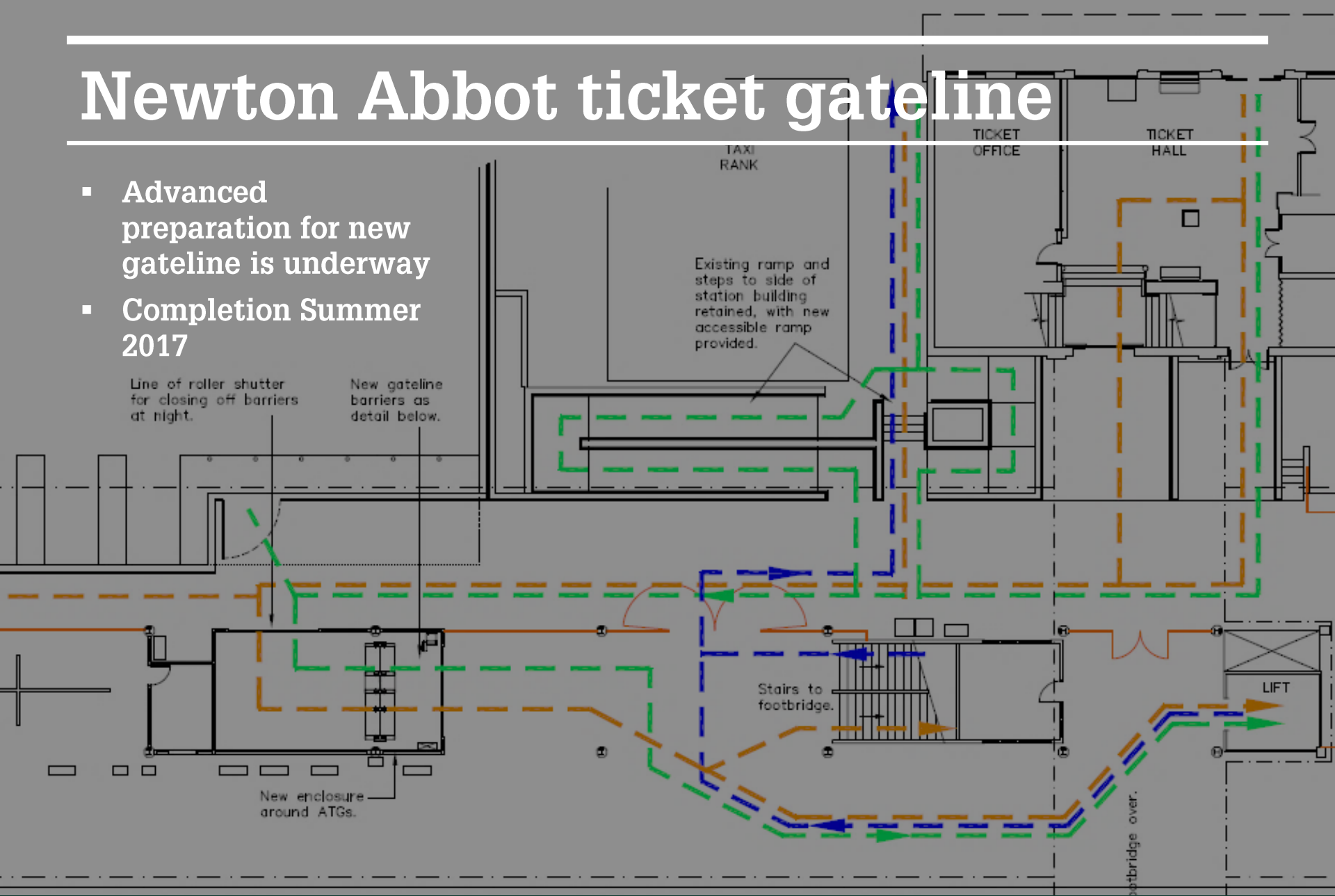
Marsh Barton and Edginswell

- Marsh Barton has secured Network Change
- Edginswell has planning consent
- Significant LEP and local authority investment
- New Stations Fund bids made in November 2016
- GWR part of Project Board, providing management time to assist planning and implementation



Newton Abbot ticket gateline

- Advanced preparation for new gateline is underway
- Completion Summer 2017



Journey Time Study

- **'Speed to the West'** Study into journey time improvements between London and the South West peninsula
- Has informed the Peninsula Rail Task Force (PRTF) report to DfT on 20 year strategy
- PRTF strategy also looking at long term resilience for the line
- Report published in November 2016
- Rail industry working with PRTF to look at next steps



Study funded by GWR to look at maximising the benefits of the AT300 trains



**PENINSULA RAIL
TASK FORCE**

Exmouth Station Improvements

- Provides a compliant ramp and new prominent entrance
- Includes night access at the front and internal waiting area improvements
- Land transfer from DCC to NR now complete
- Currently reviewing contractor's proposals, final costs and timescales



Scheme to improve station at Exmouth Station to match DCC investment in forecourt area

Anticipated period of construction: Spring 2017

Community Rail

Investment in Community Rail Partnerships

- Customer & Communities Fund (CCIF) projects for Polsloe Bridge (access improvements) and St James' Park (shelter improvements) underway
- Further CCIF Funding identified for Illuminated poster boards
- Survey work to support North Devon Line Strategy complete
- Working with ALRUG to prepare a long term strategy for the Avocet Line
- Supporting aims for efficient ticketing by investing in barcode readers at Exeter St Davids and Exeter Central to support the option to use mobile ticketing



Service enhancement

An earlier service from Crediton to Exeter

- Earlier option for commuters and connections at Exeter St Davids for the Golden Hind to London Paddington, and services to Plymouth and Bristol
- Provides additional capacity on the busiest portion into Exeter
- Creates capacity to achieve Strategy ambitions such as car parking at Copplestone

Connection Opportunities		Additional	Current
Crediton	d	07:07	07:55
Exeter St Davids	a	07:18	08:07
Exeter Central	a	07:30	08:12
Plymouth	a	08:33	09:19
Bristol Temple Meads	a	08:27	09:26
London Paddington	a	10:02	11:24

Considered achievable within the existing constraints

Uses marginal resources once the fleet cascade starts properly towards the end of the year.

Anticipated introduction: January 2018, subject to approval

Okehampton Special

We're pleased to be able to supply a special charter train

- Saturday 18th March 2017
- Okehampton to London Paddington via Crediton and Exeter
- High Speed Train with Pullman Dining
- Promoted by OkeRail Forum / OkeRail CIC

Summary

- New Intercity Express Trains being tested and AT300s under construction
- Investing in the future of high speed services (Speed to the West)
- Expanded car park at Tiverton Parkway,
- Investment in station improvements
- Depot plans progressing
- Investing in communities (look out for CCIF Round 3 announcement!)
- Steadily implementing strategies - additional Crediton service in the pipeline

Thank you



GWR